

# Bind solo

## 6600

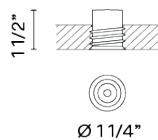
AM  
STUDIO  
CUSTOM LIGHTING

# VIBIA

Design By undefined

Bind Solo 6600 provides an indirect down lighting offering a perfect integration within its surrounding architecture by being fully recessed.

## Spec sheet



### Finish

11 Black  
NCS S 8500N

24 Beige M1  
test ral

### LED

2700 K / 3000 K / 3500 K

### Dimming

DALI / 0-10V

### Installation type

Remote driver Built-in Micro

### LED

CRI>90 451 lm 104,9  
2700 K / 3000 K / 3500 K

### Driver

Constant Current 250 110~277 V V  
50~60 Hz HZ

LED IP20  50-60Hz 

### Application

Ceiling Fixtures

### Packaging

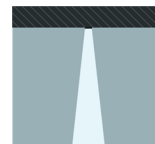
Box

Gross weight  
Net weight

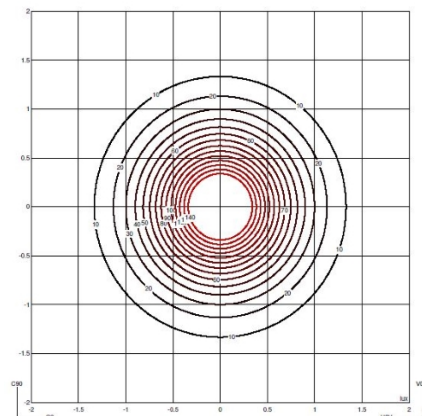
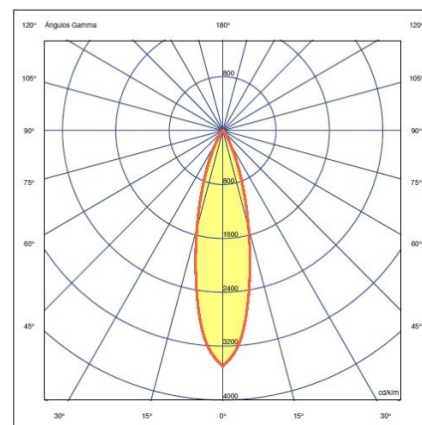
### Lighting effect

#### Accent Downlight

Narrow: Angles less than 20°. Suitable for generating high contrasts or projections at far distances.



### Photometric Data



Efficiency 75.909 lm/W  
Coordination System CG  
Total Flux 334.0 lm  
Maximum Value 3500.41 cd/klm

Any modifications require a minimum order quantity and extra lead time

All of our products come with a two year standard warranty. Check US & Canada Term and Condition [sales@vibia.com](mailto:sales@vibia.com)

VIBIA, INC.

Office / Oficina

272 Fernwood Ave. Edison, NJ 08837. USA

International T 732 417 1700

Spain / Portugal T +34 934 796 970

[sales@vibia.com](mailto:sales@vibia.com)

[www.vibia.com/us/usa](http://www.vibia.com/us/usa)

# Bind solo

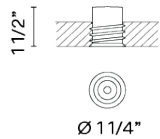
## 6604

Design By undefined

# VIBIA

Bind Solo 6604 provides an indirect down lighting offering a perfect integration within its surrounding architecture by being fully recessed.

## Spec sheet



Any modifications require a minimum order quantity and extra lead time

**Finish** 24 Beige M1  
test ral

11 Black  
NCS S 8500N

**LED** 2700 K / 3000 K / 3500 K

**Dimming** 0-10V / DALI

**Installation type** Remote driver Built-in Micro

**LED** CRI>90 451 lm 104,9  
2700 K / 3000 K / 3500 K

**Driver** Constant Current 250 110-277 V V  
50-60 Hz HZ

LED IP20  50-60Hz 

**Application** Ceiling Fixtures

**Packaging** Box

Gross weight  
Net weight

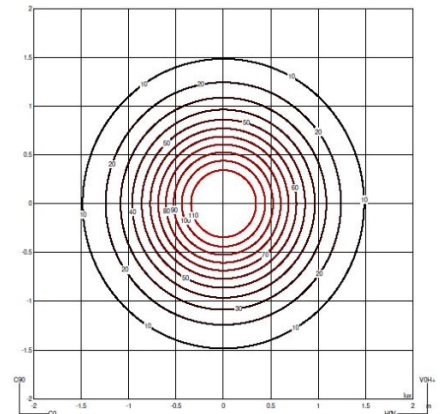
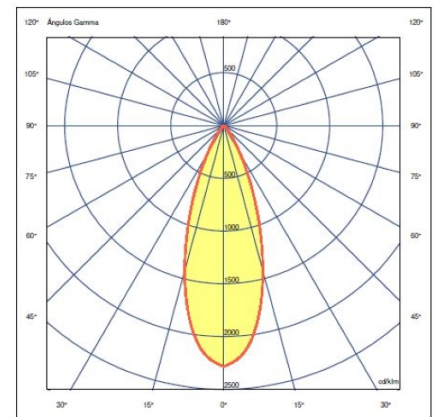
### Lighting effect

#### Accent Downlight

Narrow: Angles less than 20°. Suitable for generating high contrasts or projections at far distances.



### Photometric Data



**Efficiency** 79.773 lm/W  
**Coordination System** CG  
**Total Flux** 351.0 lm  
**Maximum Value** 2283.58 cd/klm

VIBIA, INC.

Office / Oficina  
272 Fernwood Ave. Edison, NJ 08837. USA

International T 732 417 1700  
Spain / Portugal T +34 934 796 970

sales@vibia.com  
www.vibia.com/us/usa

All of our products come with a two year standard warranty. Check US & Canada Term and Condition sales@vibia.com

# Bind solo

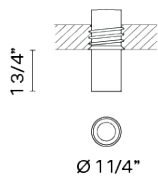
## 6610

# VIBIA

Design By undefined

Bind Solo 6610 provides downwards accent lighting via a surfaced mounted fitting. The angle of aperture allows for the creation of high contrasts over long distances.

## Spec sheet



|                |   |
|----------------|---|
| <b>Finish</b>  |  24 Beige M1<br>test ral |
|                |  11 Black<br>NCS S 8500N |
| <b>LED</b>     | 2700 K / 3000 K / 3500 K  |
| <b>Dimming</b> | On/Off  |

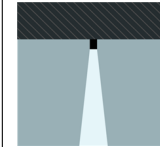
**Installation type** Remote driver Built-in Micro

|                    |   |
|--------------------|---|
| <b>LED</b>         | CRI>90 451 lm 104,9<br>2700 K / 3000 K / 3500 K |
| <b>Driver</b>      | Constant Current 250 110~277 V V<br>50~60 Hz HZ |
| <b>Application</b> | Ceiling Fixtures                                |
| <b>Packaging</b>   | Box   |
|                    | Gross weight<br>Net weight                      |

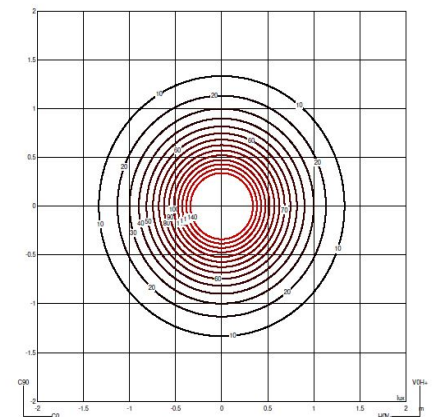
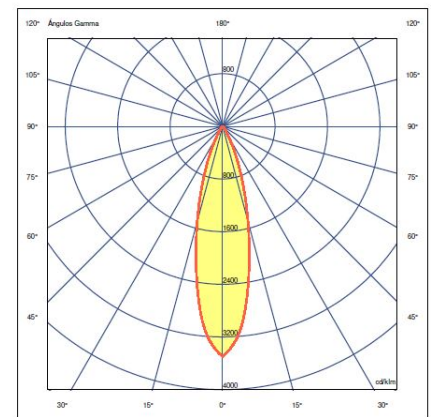
### Lighting effect

#### Accent Downlight

Narrow: Angles less than 20°. Suitable for generating high contrasts or projections at far distances.



### Photometric Data



|                            |                |
|----------------------------|----------------|
| <b>Efficiency</b>          | 75.909 lm/W    |
| <b>Coordination System</b> | CG             |
| <b>Total Flux</b>          | 334.0 lm       |
| <b>Maximum Value</b>       | 3500.41 cd/klm |

Any modifications require a minimum order quantity and extra lead time

All of our products come with a two year standard warranty. Check US & Canada Term and Condition sales@vibia.com

VIBIA, INC.

Office / Oficina  
272 Fernwood Ave. Edison, NJ 08837. USA

International T 732 417 1700  
Spain / Portugal T +34 934 796 970

sales@vibia.com  
www.vibia.com/us/usa

# Bind solo

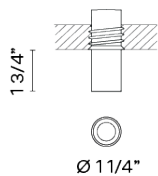
6614

# VIBIA

Design By undefined

Bind Solo provides downwards accent lighting via a surfaced mounted fitting. The angle of aperture allows for the creation of contrasts over medium distances.

## Spec sheet



Any modifications require a minimum order quantity and extra lead time

**Finish**  24 Beige M1  
test ral

 04 Black  
NCS S 8500N

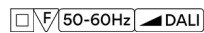
**LED** 2700 K / 3000 K / 3500 K

**Dimming** On/Off / 0-10V

**Installation type** Remote driver Built-in Micro

**LED** CRI>90 451 lm 104,9  
2700 K / 3000 K / 3500 K

**Driver** Constant Current 250 110-277 V V  
50-60 Hz HZ



**Application** Ceiling Fixtures

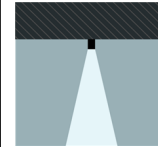
**Packaging** Box

Gross weight  
Net weight

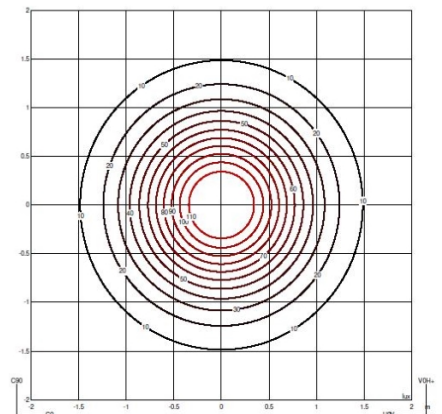
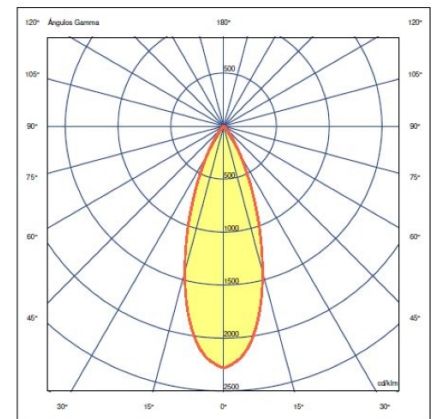
### Lighting effect

#### Accent Downlight

Narrow: Angles less than 20°. Suitable for generating high contrasts or projections at far distances.



### Photometric Data



**Efficiency** 79.773 lm/W  
**Coordination System** CG  
**Total Flux** 351.0 lm  
**Maximum Value** 2283.58 cd/klm

All of our products come with a two year standard warranty. Check US & Canada Term and Condition sales@vibia.com

VIBIA, INC.

Office / Oficina  
272 Fernwood Ave. Edison, NJ 08837. USA

International T 732 417 1700  
Spain / Portugal T +34 934 796 970

sales@vibia.com  
www.vibia.com/us/usa

# Bind solo

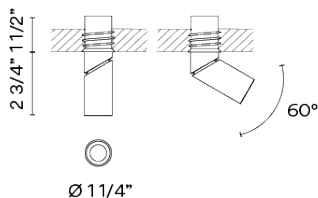
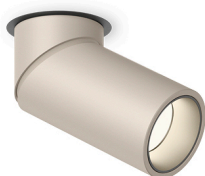
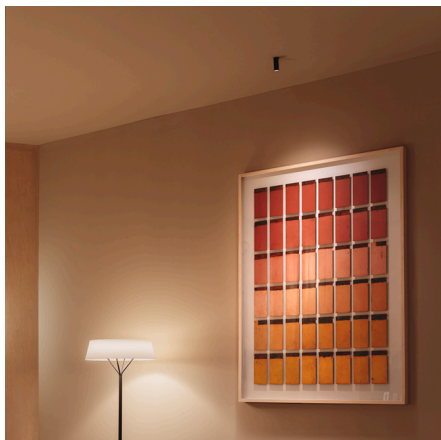
## 6620

# VIBIA

Design By undefined

The Blind Solo 6620 spotlight allows for visual gradations as well as highlighting functional zones, objects and architectural elements.

### Spec sheet



Any modifications require a minimum order quantity and extra lead time

|                          |  |
|--------------------------|--|
| <b>Finish</b>            | <ul style="list-style-type: none"> <li><span style="display: inline-block; width: 15px; height: 15px; background-color: black; border-radius: 50%; margin-right: 5px;"></span> 11 Black<br/>NCS S 8500N</li> <li><span style="display: inline-block; width: 15px; height: 15px; background-color: #c0a080; border-radius: 50%; margin-right: 5px;"></span> 24 Beige M1<br/>test ral</li> </ul> |
| <b>LED</b>               | 2700 K / 3000 K / 3500 K   |
| <b>Dimming</b>           | DALI / 0-10V   |
| <b>Installation type</b> | Remote driver Built-in Micro   |

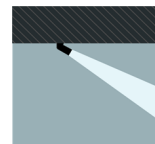
|                    |   |
|--------------------|---|
| <b>LED</b>         | CRI>90 451 lm 104,9<br>2700 K / 3000 K / 3500 K |
| <b>Driver</b>      | Constant Current 250 110~277 V V<br>50~60 Hz HZ |
| <b>Application</b> | Ceiling Fixtures                                |
| <b>Packaging</b>   | Box   |
|                    | Gross weight                                    |
|                    | Net weight                                      |



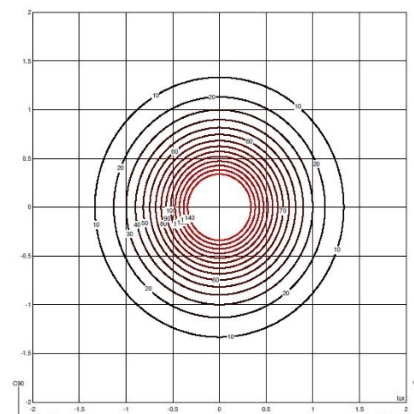
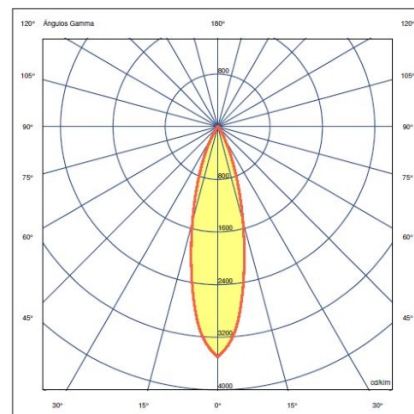
#### Lighting effect

##### Accent Spotlight

Narrow: Angles less than 20°. Suitable for generating high contrasts or projections at far distances.



#### Photometric Data



|                            |                |
|----------------------------|----------------|
| <b>Efficiency</b>          | 75.909 lm/W    |
| <b>Coordination System</b> | CG             |
| <b>Total Flux</b>          | 334.0 lm       |
| <b>Maximum Value</b>       | 3500.41 cd/klm |

All of our products come with a two year standard warranty. Check US & Canada Term and Condition sales@vibia.com

VIBIA, INC.

Office / Oficina  
272 Fernwood Ave. Edison, NJ 08837. USA

International T 732 417 1700  
Spain / Portugal T +34 934 796 970

sales@vibia.com  
www.vibia.com/us/usa

# Bind solo

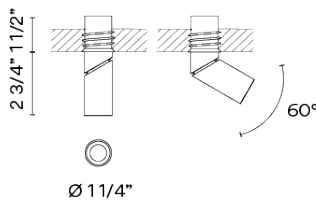
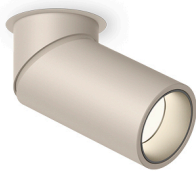
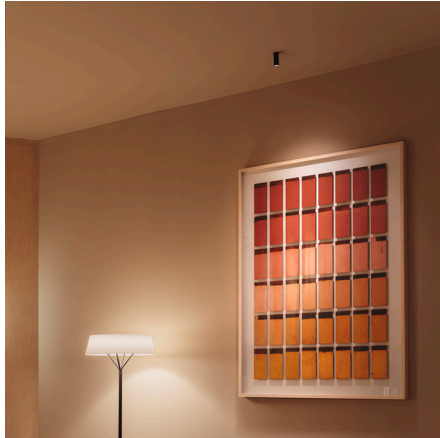
## 6624

Design By undefined

# VIBIA

The Bind Solo 6624 spotlight allows for visual gradations as well as highlighting functional zones, objects and architectural elements.

## Spec sheet



### Finish

11 Black  
NCS S 8500N

24 Beige M1  
test ral

### LED

2700 K / 3000 K / 3500 K

### Dimming

On/Off / 0-10V

### Installation type

Remote driver Built-in Micro

### LED

CRI>90 451 lm 104,9  
2700 K / 3000 K / 3500 K

### Driver

Constant Current 250 110~277 V V  
50~60 Hz HZ

LED IP20 50-60Hz

### Application

Ceiling Fixtures

### Packaging

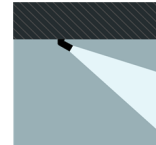
Box

Gross weight  
Net weight

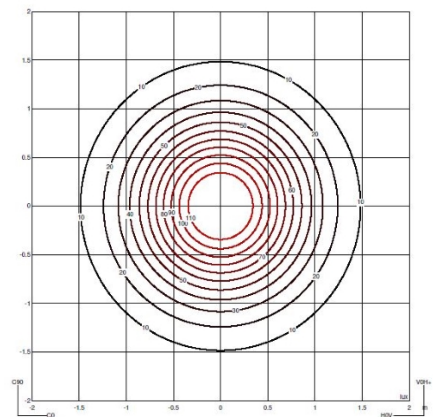
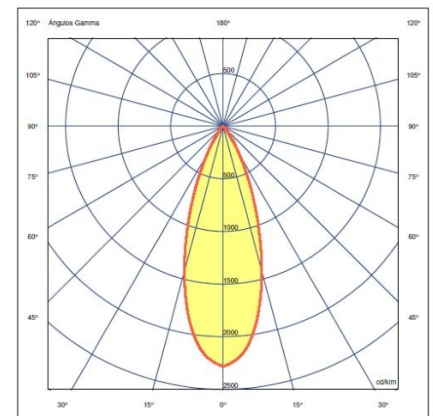
### Lighting effect

#### Accent Spotlight

Narrow: Angles less than 20°. Suitable for generating high contrasts or projections at far distances.



### Photometric Data



### Efficiency

79.773 lm/W

### Coordination System

CG

### Total Flux

351.0 lm

### Maximum Value

2283.58 cd/klm

Any modifications require a minimum order quantity and extra lead time

All of our products come with a two year standard warranty. Check US & Canada Term and Condition sales@vibia.com

VIBIA, INC.

Office / Oficina

272 Fernwood Ave. Edison, NJ 08837. USA

International T 732 417 1700

Spain / Portugal T +34 934 796 970

sales@vibia.com

www.vibia.com/us/usa

# Bind solo

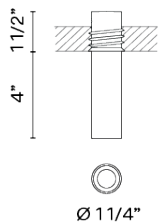
## 6630

Design By undefined

# VIBIA

The Blind Solo 6630 spotlight allows for visual gradations as well as highlighting functional zones, objects and architectural elements.

## Spec sheet



**Finish** 24 Beige M1  
test ral

11 Black  
NCS S 8500N

**LED** 2700 K / 3000 K / 3500 K

**Dimming** DALI / 0-10V

**Installation type** Remote driver Built-in Micro

**LED** CRI>90 451 lm 104,9  
2700 K / 3000 K / 3500 K

**Driver** 250 110~277 V V 50~60 Hz HZ

LED IP20  50-60Hz 

**Application** Ceiling Fixtures

**Packaging** Box

Gross weight  
Net weight

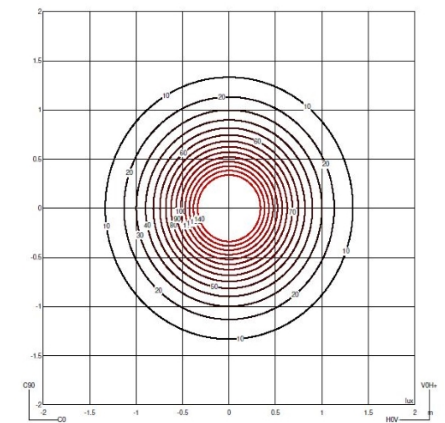
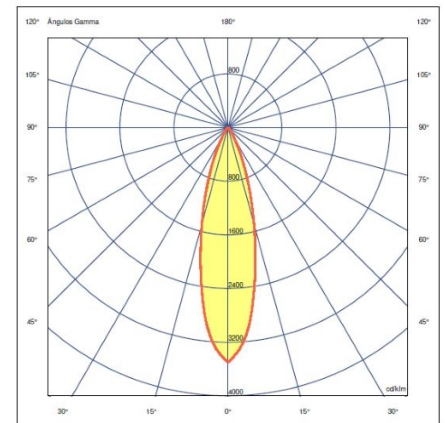
### Lighting effect

#### Accent Downlight

Narrow: Angles less than 20°. Suitable for generating high contrasts or projections at far distances.



### Photometric Data



**Efficiency** 75.909 lm/W  
**Coordination System** CG  
**Total Flux** 334.0 lm  
**Maximum Value** 3500.41 cd/klm

Any modifications require a minimum order quantity and extra lead time

All of our products come with a two year standard warranty. Check US & Canada Term and Condition sales@vibia.com

VIBIA, INC.

Office / Oficina  
272 Fernwood Ave. Edison, NJ 08837. USA

International T 732 417 1700  
Spain / Portugal T +34 934 796 970

sales@vibia.com  
www.vibia.com/us/usa

# Bind solo

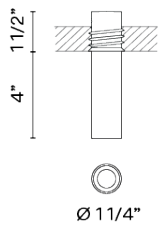
## 6634

Design By undefined

# VIBIA

Bind Solo 6634 provides downwards accent lighting via a surfaced mounted fitting. The angle of aperture allows for the creation of contrasts over medium distances.

## Spec sheet



Any modifications require a minimum order quantity and extra lead time

**Finish** 24 Beige M1  
test ral

11 Black  
NCS S 8500N

**LED** 2700 K / 3000 K / 3500 K

**Dimming** On/Off / 0-10V

**Installation type** Remote driver Built-in Micro

**LED** CRI>90 451 lm 104,9  
2700 K / 3000 K / 3500 K

**Driver** Constant Current 250 110-277 V V  
50-60 Hz HZ

LED IP20  50-60Hz 

**Application** Ceiling Fixtures

**Packaging** Box

Gross weight  
Net weight

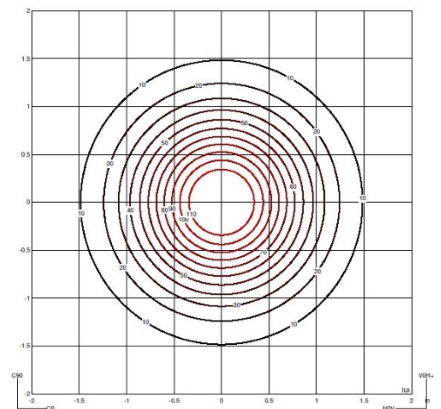
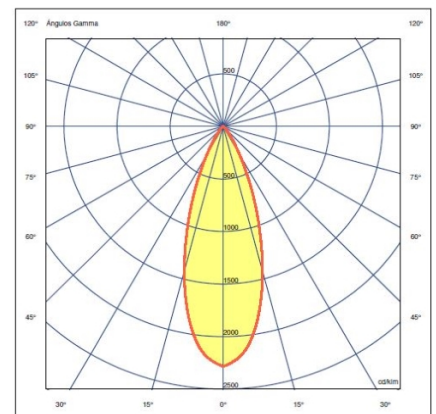
### Lighting effect

#### Accent Downlight

Narrow: Angles less than 20°. Suitable for generating high contrasts or projections at far distances.



### Photometric Data



**Efficiency** 79.773 lm/W  
**Coordination System** CG  
**Total Flux** 351.0 lm  
**Maximum Value** 2283.58 cd/klm

VIBIA, INC.

Office / Oficina  
272 Fernwood Ave. Edison, NJ 08837. USA

International T 732 417 1700  
Spain / Portugal T +34 934 796 970

sales@vibia.com  
www.vibia.com/us/usa

All of our products come with a two year standard warranty. Check US & Canada Term and Condition sales@vibia.com



# Bind solo

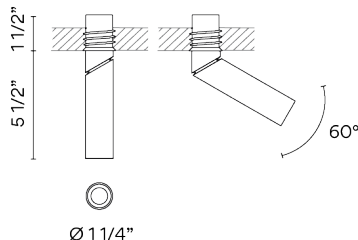
## 6640

# VIBIA

Design By undefined

The Blind Solo 6640 spotlight allows for visual gradations as well as highlighting functional zones, objects and architectural elements.

## Spec sheet



Any modifications require a minimum order quantity and extra lead time

### Finish

● 11 Black  
NCS S 8500N

● 24 Beige M1  
test ral

### LED

2700 K / 3000 K / 3500 K

### Dimming

0-10V / DALI

### Installation type

Remote driver Built-in Micro

### LED

CRI>90 451 lm 104,9  
2700 K / 3000 K / 3500 K

### Driver

Constant Current 110~277 V V 50~60  
Hz HZ

LED IP20 50-60Hz

### Application

Ceiling Fixtures

### Packaging

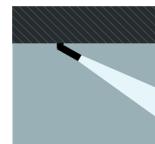
Box

Gross weight  
Net weight

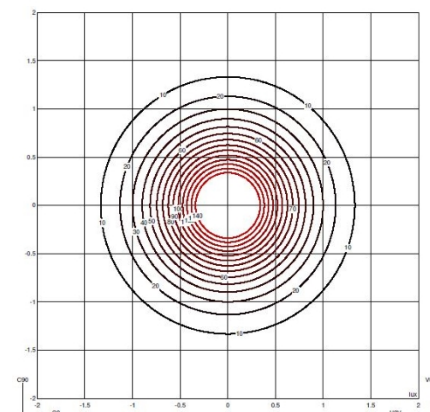
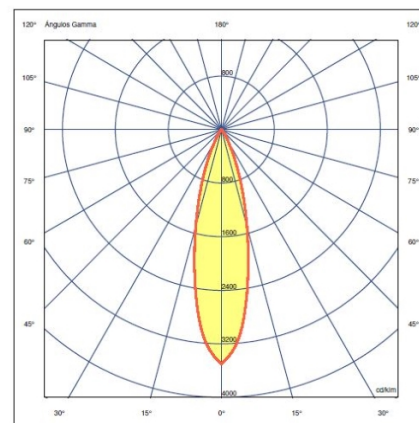
### Lighting effect

#### Accent Spotlight

Narrow: Angles less than 20°. Suitable for generating high contrasts or projections at far distances.



### Photometric Data



### Efficiency

75.909 lm/W

### Coordination System

CG

### Total Flux

334.0 lm

### Maximum Value

3500.41 cd/klm

All of our products come with a two year standard warranty. Check US & Canada Term and Condition sales@vibia.com

VIBIA, INC.

Office / Oficina

272 Fernwood Ave. Edison, NJ 08837. USA

International T 732 417 1700

Spain / Portugal T +34 934 796 970

sales@vibia.com

www.vibia.com/us/usa

# Bind solo

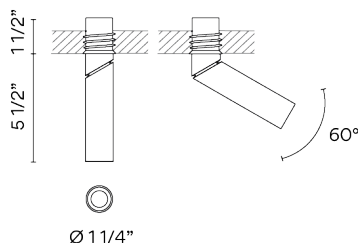
## 6644

# VIBIA

Design By undefined

The Blind Solo 6644 spotlight allows for visual gradations as well as highlighting functional zones, objects and architectural elements.

## Spec sheet



Any modifications require a minimum order quantity and extra lead time

|                |   |
|----------------|---|
| <b>Finish</b>  |  24 Beige M1<br>test ral |
|                |  11 Black<br>NCS S 8500N |
| <b>LED</b>     | 2700 K / 3000 K / 3500 K  |
| <b>Dimming</b> | On/Off / 0-10V  |

**Installation type** Remote driver Built-in Micro

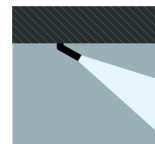
|                    |   |
|--------------------|---|
| <b>LED</b>         | CRI>90 451 lm 104,9<br>2700 K / 3000 K / 3500 K |
| <b>Driver</b>      | Constant Current 250 110~277 V V<br>50~60 Hz HZ |
| <b>Application</b> | Ceiling Fixtures                                |
| <b>Packaging</b>   | Box   |
|                    | Gross weight<br>Net weight                      |

LED IP20  50-60Hz 

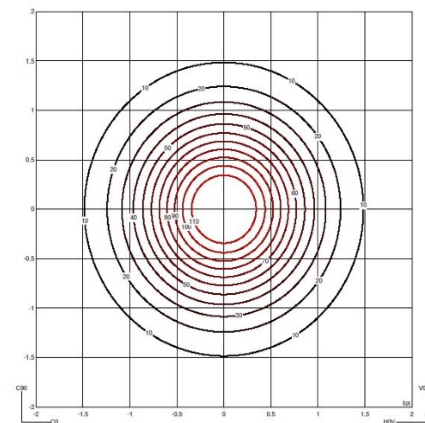
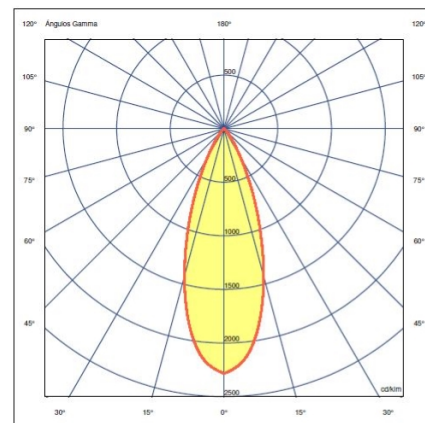
### Lighting effect

#### Accent Spotlight

Narrow: Angles less than 20°. Suitable for generating high contrasts or projections at far distances.



### Photometric Data



|                            |                |
|----------------------------|----------------|
| <b>Efficiency</b>          | 79.773 lm/W    |
| <b>Coordination System</b> | CG             |
| <b>Total Flux</b>          | 351.0 lm       |
| <b>Maximum Value</b>       | 2283.58 cd/klm |

All of our products come with a two year standard warranty. Check US & Canada Term and Condition sales@vibia.com

VIBIA, INC.

Office / Oficina  
272 Fernwood Ave. Edison, NJ 08837. USA

International T 732 417 1700  
Spain / Portugal T +34 934 796 970

sales@vibia.com  
www.vibia.com/us/usa

# Bind solo

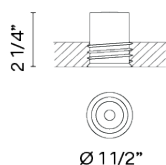
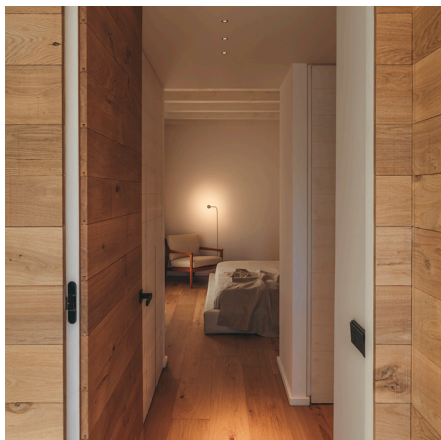
## 6650

# VIBIA

Design By undefined

Bind Solo 6650 provides direct down lighting, offering perfect integration within its surrounding architecture as it is completely recessed.

## Spec sheet



Any modifications require a minimum order quantity and extra lead time

**Finish**

- 11 Black  
NCS S 8500N

- 24 Beige M1  
test ral



**LED** 3000 K / 3500 K

**Dimming** DALI / 0-10V

**Installation type** Remote driver Built-in Micro

**LED** CRI>90 530 lm 101,9  
3000 K / 3500 K

**Driver** Constant Current 300 110-277 V V  
50-60 Hz HZ

LED IP20  50-60Hz 

**Application** Ceiling Fixtures

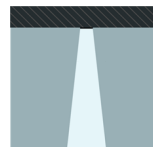
**Packaging** Box

Gross weight  
Net weight

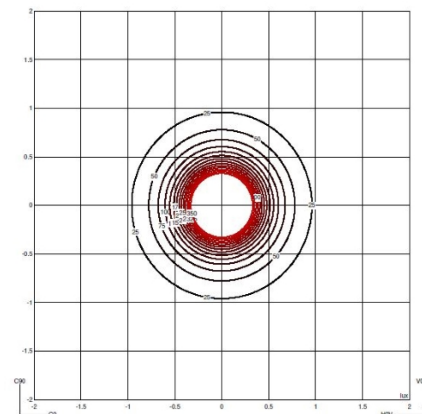
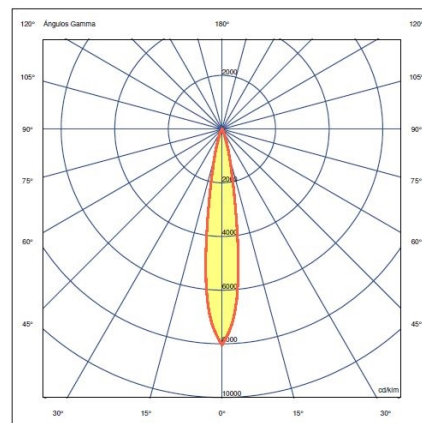
### Lighting effect

#### Accent Downlight

Narrow: Angles less than 20°. Suitable for generating high contrasts or projections at far distances.



### Photometric Data



**Efficiency** 90.928 lm/W  
**Coordination System** CG  
**Total Flux** 491.0 lm  
**Maximum Value** 8039.76 cd/klm

VIBIA, INC.

Office / Oficina  
272 Fernwood Ave. Edison, NJ 08837. USA

International T 732 417 1700  
Spain / Portugal T +34 934 796 970

sales@vibia.com  
www.vibia.com/us/usa

All of our products come with a two year standard warranty. Check US & Canada Term and Condition sales@vibia.com

# Bind solo

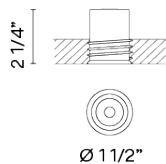
## 6654



# VIBIA

Design By undefined

Bind Solo 6654 provides direct down lighting, offering perfect integration within its surrounding architecture as it is completely recessed.

## Spec sheet



|                |   |
|----------------|---|
| <b>Finish</b>  |  24 Beige M1<br>test ral |
|                |  11 Black<br>NCS S 8500N |
| <b>LED</b>     | 2700 K / 3000 K / 3500 K / Tunable White  |
| <b>Dimming</b> | 0-10V / DALI  |

**Installation type** Remote driver Built-in Micro

**LED** CRI>90 530 lm 101,9  
2700 K / 3000 K / 3500 K / Tunable White

**Driver** Constant Current 300 110~277 V V  
50~60 Hz HZ

LED IP20  50-60Hz 

**Application** Ceiling Fixtures

**Packaging** Box

Gross weight  
Net weight

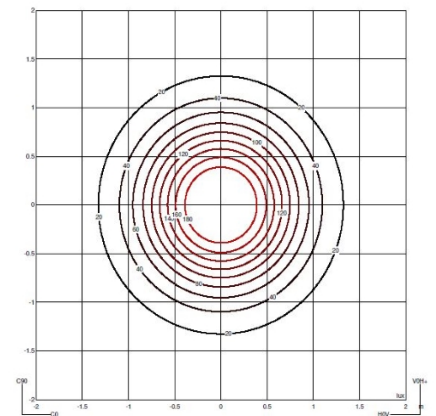
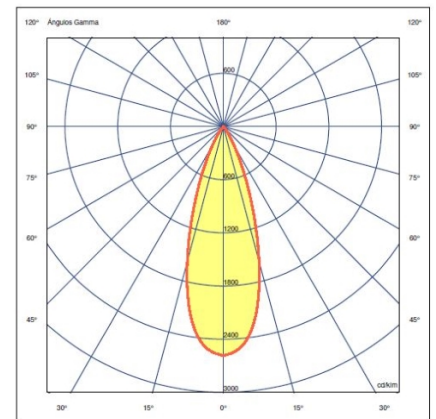
### Lighting effect

#### Accent Downlight

Narrow: Angles less than 20°. Suitable for generating high contrasts or projections at far distances.



### Photometric Data



|                            |                |
|----------------------------|----------------|
| <b>Efficiency</b>          | 96.037 lm/W    |
| <b>Coordination System</b> | CG             |
| <b>Total Flux</b>          | 518.6 lm       |
| <b>Maximum Value</b>       | 2586.75 cd/klm |

Any modifications require a minimum order quantity and extra lead time

All of our products come with a two year standard warranty. Check US & Canada Term and Condition sales@vibia.com

VIBIA, INC.

Office / Oficina

272 Fernwood Ave. Edison, NJ 08837. USA

International T 732 417 1700

Spain / Portugal T +34 934 796 970

sales@vibia.com

www.vibia.com/us/usa

# Bind solo

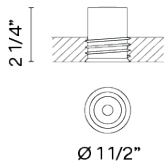
## 6658

Design By undefined



# VIBIA

Bind Solo 6658 provides direct down lighting, offering perfect integration within its surrounding architecture as it is completely recessed.

## Spec sheet



Any modifications require a minimum order quantity and extra lead time

|                |   |
|----------------|---|
| <b>Finish</b>  |  11 Black<br>NCS S 8500N |
|                |  24 Beige M1<br>test ral |
| <b>LED</b>     | 2700 K / 3000 K / 3500 K / Tunable White  |
| <b>Dimming</b> | DALI / 0-10V  |

**Installation type** Remote driver Built-in Micro

**LED** CRI>90 530 lm 101,9  
2700 K / 3000 K / 3500 K / Tunable White

**Driver** Constant Current 300 110-277 V V  
50-60 Hz HZ

LED IP20  50-60Hz 

**Application** Ceiling Fixtures

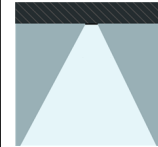
**Packaging** Box

Gross weight  
Net weight

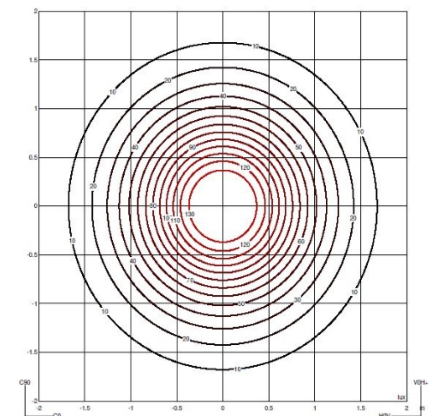
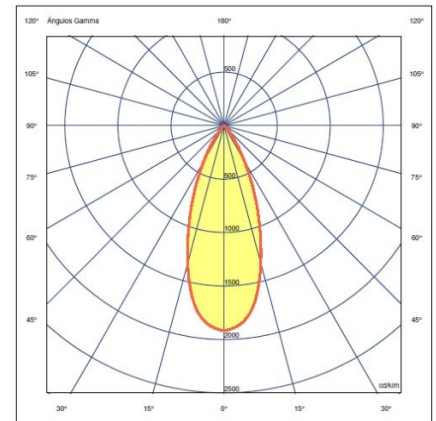
### Lighting effect

#### Accent Downlight

Narrow: Angles less than 20°. Suitable for generating high contrasts or projections at far distances.



### Photometric Data



|                            |                |
|----------------------------|----------------|
| <b>Efficiency</b>          | 89,397 lm/W    |
| <b>Coordination System</b> | CG             |
| <b>Total Flux</b>          | 480.1 lm       |
| <b>Maximum Value</b>       | 1918.08 cd/klm |

All of our products come with a two year standard warranty. Check US & Canada Term and Condition sales@vibia.com

VIBIA, INC.

Office / Oficina  
272 Fernwood Ave. Edison, NJ 08837. USA

International T 732 417 1700  
Spain / Portugal T +34 934 796 970

sales@vibia.com  
www.vibia.com/us/usa

# Bind solo

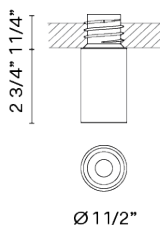
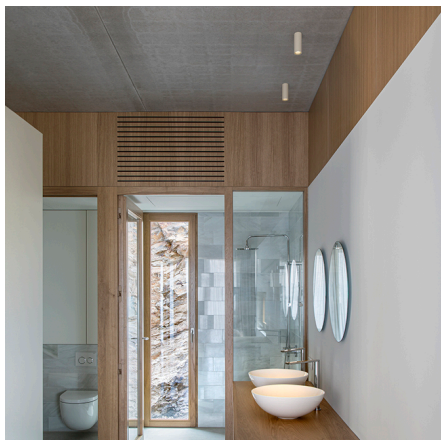
## 6660



# VIBIA



Design By undefined

Bind Solo 6660 provides accent down light via a surface mounted fitting. The angle of aperture creates high contrasts over long distances.

## Spec sheet



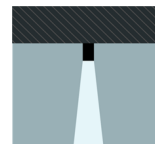
|                          |   |
|--------------------------|---|
| <b>Finish</b>            |  11 Black<br>NCS S 8500N |
|                          |  24 Beige M1<br>test ral |
| <b>LED</b>               | 2700 K / 3000 K / 3500 K  |
| <b>Dimming</b>           | On/Off  |
| <b>Installation type</b> | Remote driver Built-in Micro  |

|                    |   |
|--------------------|---|
| <b>LED</b>         | CRI>90 530 lm 101,9<br>2700 K / 3000 K / 3500 K   |
| <b>Driver</b>      | Constant Current 300 110~277 V V<br>50~60 Hz HZ   |
|                    |   50-60Hz |
| <b>Application</b> | Ceiling Fixtures  |
| <b>Packaging</b>   | Box   |
|                    | Gross weight<br>Net weight  |

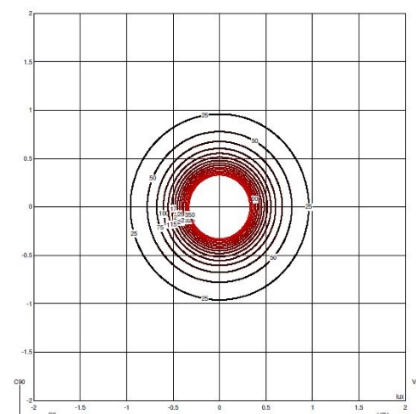
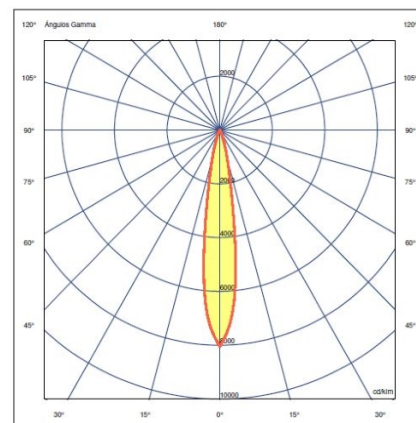
### Lighting effect

#### Accent Downlight

Narrow: Angles less than 20°. Suitable for generating high contrasts or projections at far distances.



### Photometric Data



|                            |                |
|----------------------------|----------------|
| <b>Efficiency</b>          | 90.928 lm/W    |
| <b>Coordination System</b> | CG             |
| <b>Total Flux</b>          | 491.0 lm       |
| <b>Maximum Value</b>       | 8039.76 cd/klm |

Any modifications require a minimum order quantity and extra lead time

All of our products come with a two year standard warranty. Check US & Canada Term and Condition sales@vibia.com

VIBIA, INC.

Office / Oficina  
272 Fernwood Ave. Edison, NJ 08837. USA

International T 732 417 1700  
Spain / Portugal T +34 934 796 970

sales@vibia.com  
www.vibia.com/us/usa

# Bind solo

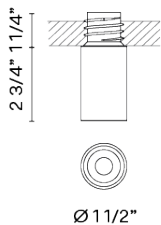
6664

# VIBIA



Design By undefined

Bind Solo 6664 provides accent down light via a surface mounted fitting. The angle of aperture creates high contrasts over medium distances.



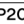


## Spec sheet



Any modifications require a minimum order quantity and extra lead time

|                |   |
|----------------|---|
| <b>Finish</b>  |  24 Beige M1<br>test ral |
|                |  11 Black<br>NCS S 8500N |
| <b>LED</b>     | 2700 K / 3000 K / 3500 K / Tunable White  |
| <b>Dimming</b> | 0-10V / DALI  |

**Installation type** Remote driver Built-in Micro

|                    |   |
|--------------------|---|
| <b>LED</b>         | CRI>90 530 lm 101,9<br>2700 K / 3000 K / 3500 K / Tunable White   |
| <b>Driver</b>      | Constant Current 300 110~277 V V<br>50~60 Hz HZ   |
|                    |      |
| <b>Application</b> | Ceiling Fixtures  |
| <b>Packaging</b>   | Box   |
|                    | Gross weight<br>Net weight  |

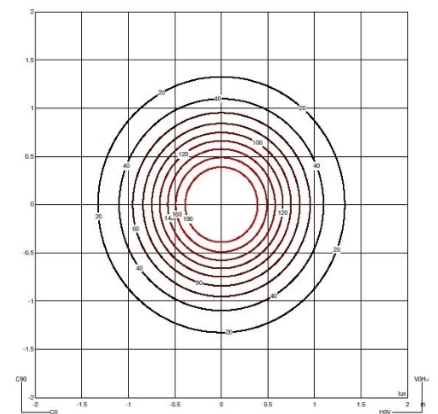
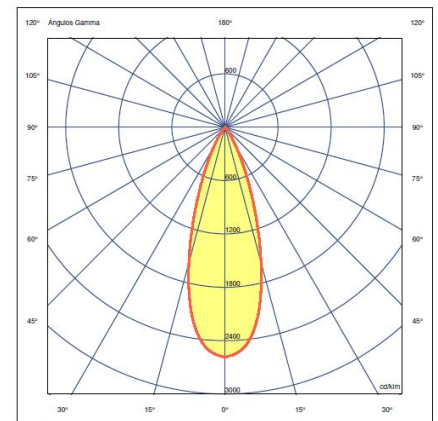
### Lighting effect

#### Accent Downlight

Narrow: Angles less than 20°. Suitable for generating high contrasts or projections at far distances.



### Photometric Data



|                            |                |
|----------------------------|----------------|
| <b>Efficiency</b>          | 96.037 lm/W    |
| <b>Coordination System</b> | CG             |
| <b>Total Flux</b>          | 518.6 lm       |
| <b>Maximum Value</b>       | 2586.75 cd/klm |

All of our products come with a two year standard warranty. Check US & Canada Term and Condition sales@vibia.com

VIBIA, INC.

Office / Oficina  
272 Fernwood Ave. Edison, NJ 08837. USA

International T 732 417 1700  
Spain / Portugal T +34 934 796 970

sales@vibia.com  
www.vibia.com/us/usa

# Bind solo

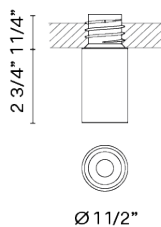
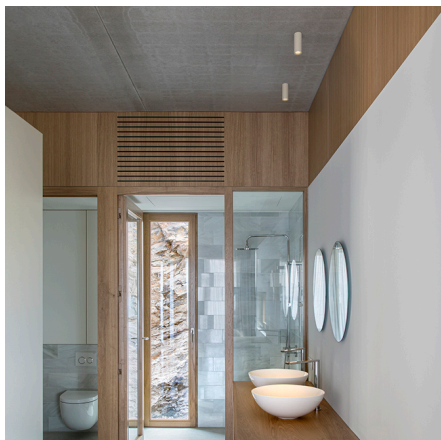
6668

# VIBIA

Design By undefined

Bind Solo 6668 provides accent down light via a surface mounted fitting. The angle of aperture creates medium contrasts over short distances.

## Spec sheet



### Finish

11 Black  
NCS S 8500N

24 Beige M1  
test ral

### LED

2700 K / 3000 K / 3500 K / Tunable White

### Dimming

DALI / 0-10V

### Installation type

Remote driver Built-in Micro

### LED

CRI>90 530 lm 101,9  
2700 K / 3000 K / 3500 K / Tunable White

### Driver

Constant Current 300 110~277 V V  
50~60 Hz HZ

LED IP20 50-60Hz

### Application

Ceiling Fixtures

### Packaging

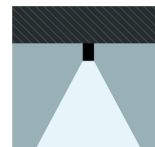
Box

Gross weight  
Net weight

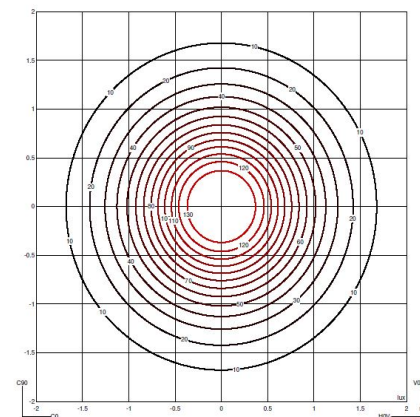
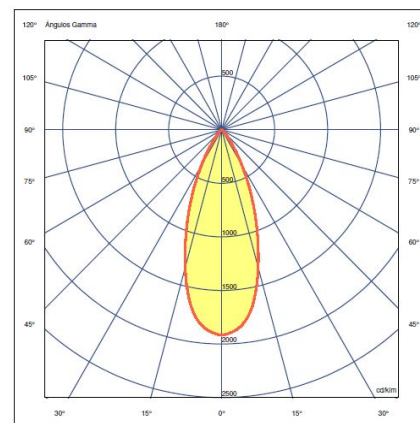
### Lighting effect

#### Accent Downlight

Narrow: Angles less than 20°. Suitable for generating high contrasts or projections at far distances.



### Photometric Data



Efficiency 89.397 lm/W  
Coordination System CG  
Total Flux 480.1 lm  
Maximum Value 1918.08 cd/klm

Any modifications require a minimum order quantity and extra lead time

All of our products come with a two year standard warranty. Check US & Canada Term and Condition sales@vibia.com

VIBIA, INC.

Office / Oficina

272 Fernwood Ave. Edison, NJ 08837. USA

International T 732 417 1700

Spain / Portugal T +34 934 796 970

sales@vibia.com

www.vibia.com/us/usa



# Bind solo

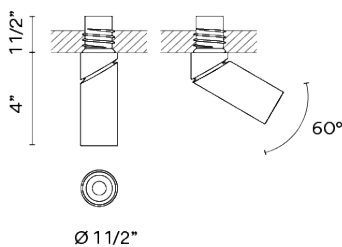
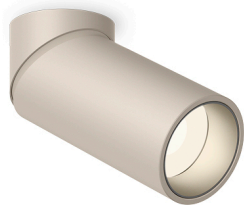
## 6670

# VIBIA

Design By undefined

The Bind Solo 6670 spotlight allows for visual gradations as well as highlighting functional zones, objects and architectural elements.

## Spec sheet



Any modifications require a minimum order quantity and extra lead time

**Finish** 24 Beige M1  
test ral

11 Black  
NCS S 8500N

**LED** 2700 K / 3000 K / 3500 K

**Dimming** 0-10V / DALI

**Installation type** Remote driver Built-in Micro

**LED** CRI>90 530 lm 101,9  
2700 K / 3000 K / 3500 K

**Driver** Constant Current 300 110-277 V V  
50-60 Hz HZ

LED IP20 50-60Hz

**Application** Ceiling Fixtures

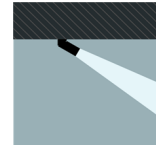
**Packaging** Box

Gross weight  
Net weight

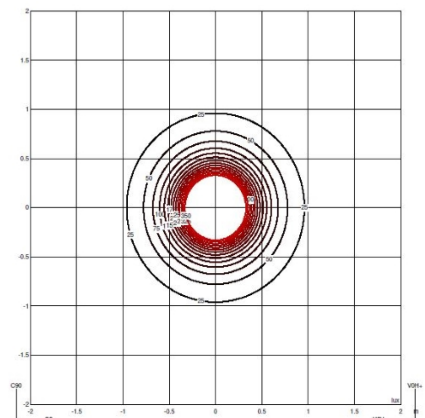
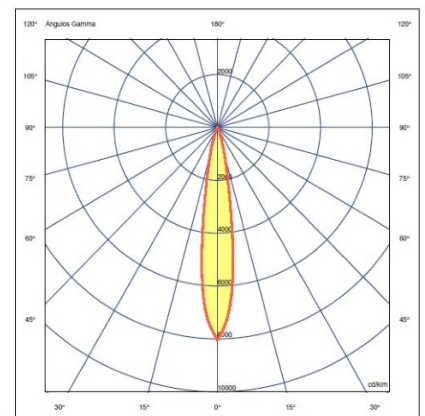
### Lighting effect

#### Accent Spotlight

Narrow: Angles less than 20°. Suitable for generating high contrasts or projections at far distances.



### Photometric Data



**Efficiency** 90.928 lm/W  
**Coordination System** CG  
**Total Flux** 491.0 lm  
**Maximum Value** 8039.76 cd/klm

VIBIA, INC.

Office / Oficina  
272 Fernwood Ave. Edison, NJ 08837. USA

International T 732 417 1700  
Spain / Portugal T +34 934 796 970

sales@vibia.com  
www.vibia.com/us/usa

All of our products come with a two year standard warranty. Check US & Canada Term and Condition sales@vibia.com

# Bind solo

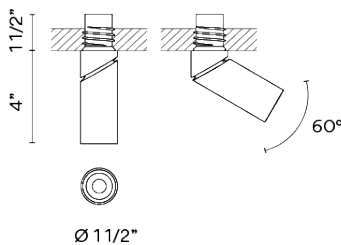
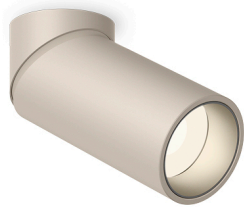
6674

# VIBIA

Design By undefined

The Bind Solo 6674 spotlight allows for visual gradations as well as highlighting functional zones, objects and architectural elements.

## Spec sheet



Any modifications require a minimum order quantity and extra lead time

### Finish

11 Black  
NCS S 8500N

24 Beige M1  
test ral

### LED

2700 K / 3000 K / 3500 K / Tunable White

### Dimming

On/Off / 0-10V

### Installation type

Remote driver Built-in Micro

### LED

CRI>90 530 lm 101,9  
2700 K / 3000 K / 3500 K / Tunable White

### Driver

Constant Current 300 110~277 V V  
50~60 Hz HZ

LED IP20  50-60Hz 

### Application

Ceiling Fixtures

### Packaging

Box

Gross weight  
Net weight

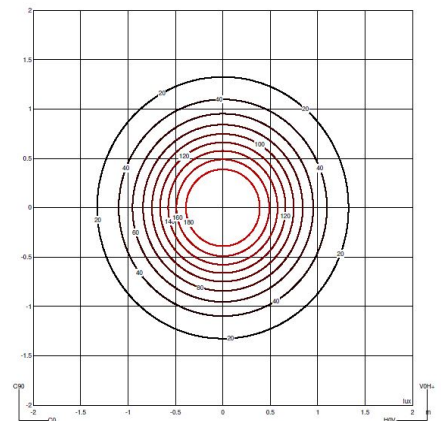
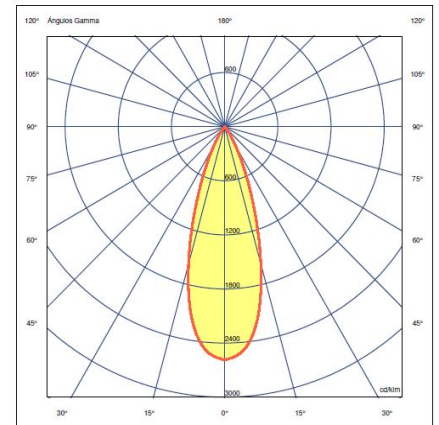
### Lighting effect

#### Accent Spotlight

Narrow: Angles less than 20°. Suitable for generating high contrasts or projections at far distances.



### Photometric Data



Efficiency 96.037 lm/W  
Coordination System CG  
Total Flux 518.6 lm  
Maximum Value 2586.75 cd/klm

All of our products come with a two year standard warranty. Check US & Canada Term and Condition sales@vibia.com

VIBIA, INC.

Office / Oficina

272 Fernwood Ave. Edison, NJ 08837. USA

International T 732 417 1700

Spain / Portugal T +34 934 796 970

sales@vibia.com

www.vibia.com/us/usa

# Bind solo

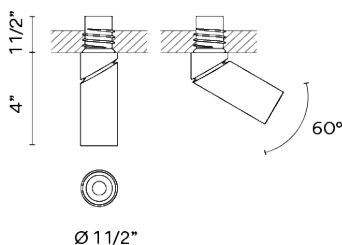
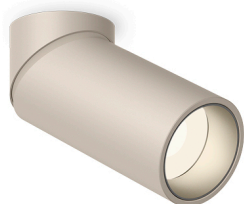
6678

# VIBIA



Design By undefined

The Bind Solo 6678 spotlight allows for visual gradations as well as highlighting functional zones, objects and architectural elements.

## Spec sheet





Any modifications require a minimum order quantity and extra lead time

|                |   |
|----------------|---|
| <b>Finish</b>  |  24 Beige M1<br>test ral |
|                |  11 Black<br>NCS S 8500N |
| <b>LED</b>     | 2700 K / 3000 K / 3500 K / Tunable White  |
| <b>Dimming</b> | 0-10V / On/Off  |

**Installation type** Remote driver Built-in Micro

**LED** CRI>90 530 lm 101,9  
2700 K / 3000 K / 3500 K / Tunable White

**Driver** Constant Current 300 110-277 V V  
50-60 Hz HZ

LED IP20  50-60Hz 

**Application** Ceiling Fixtures

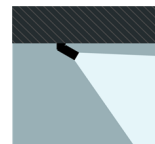
**Packaging** Box

Gross weight  
Net weight

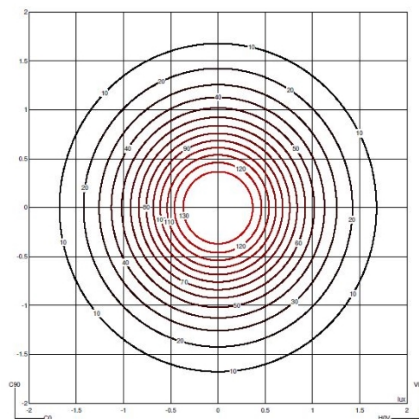
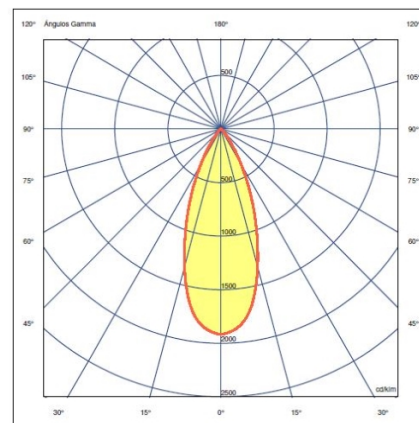
### Lighting effect

#### Accent Spotlight

Narrow: Angles less than 20°. Suitable for generating high contrasts or projections at far distances.



### Photometric Data



|                            |                |
|----------------------------|----------------|
| <b>Efficiency</b>          | 89,397 lm/W    |
| <b>Coordination System</b> | CG             |
| <b>Total Flux</b>          | 480.1 lm       |
| <b>Maximum Value</b>       | 1918.08 cd/klm |

All of our products come with a two year standard warranty. Check US & Canada Term and Condition sales@vibia.com

VIBIA, INC.

Office / Oficina  
272 Fernwood Ave. Edison, NJ 08837. USA

International T 732 417 1700  
Spain / Portugal T +34 934 796 970

sales@vibia.com  
www.vibia.com/us/usa

# Bind solo

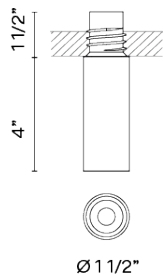
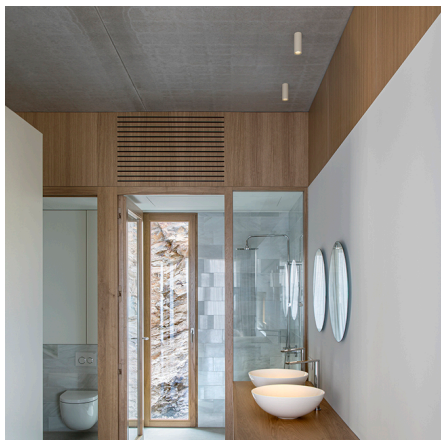
6680

# VIBIA

Design By undefined

Bind Solo 6680 provides accent down light via a surface mounted fitting. The angle of aperture creates high contrasts over long distances.

## Spec sheet



Any modifications require a minimum order quantity and extra lead time

### Finish

11 Black  
NCS S 8500N

24 Beige M1  
test ral

### LED

2700 K / 3000 K / 3500 K

### Dimming



0-10V / DALI

### LED

CRI>90 530 lm 101,9  
2700 K / 3000 K / 3500 K

### Driver

Constant Current 300 110~277 V V  
50~60 Hz HZ

LED IP20  50-60Hz 

### Application

Ceiling Fixtures

### Packaging

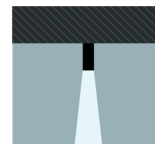
Box

Gross weight  
Net weight

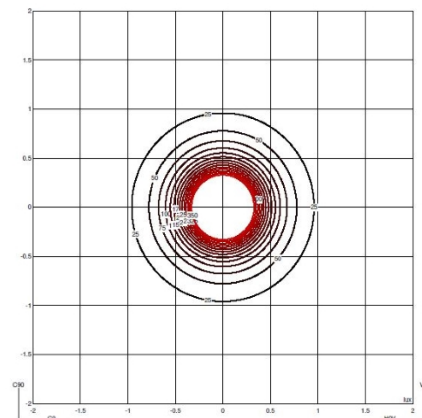
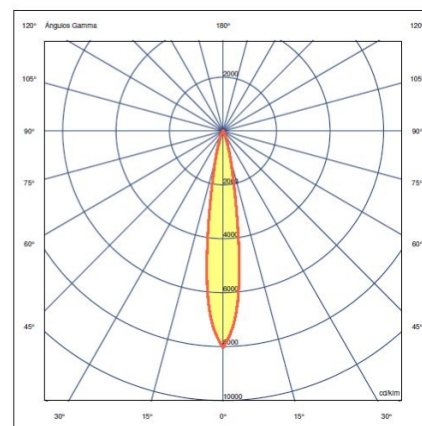
### Lighting effect

#### Accent Downlight

Narrow: Angles less than 20°. Suitable for generating high contrasts or projections at far distances.



### Photometric Data



Efficiency 90.928 lm/W  
Coordination System CG  
Total Flux 491.0 lm  
Maximum Value 8039.76 cd/klm

All of our products come with a two year standard warranty. Check US & Canada Term and Condition sales@vibia.com

VIBIA, INC.

Office / Oficina

272 Fernwood Ave. Edison, NJ 08837. USA

International T 732 417 1700

Spain / Portugal T +34 934 796 970

sales@vibia.com

www.vibia.com/us/usa

# Bind solo

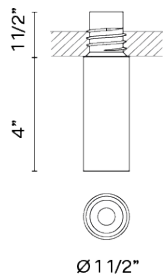
## 6684

Design By undefined

# VIBIA

Bind Solo 6684 provides accent down light via a surface mounted fitting. The angle of aperture creates high contrasts over medium distances.

## Spec sheet



### Finish

11 Black  
NCS S 8500N

24 Beige M1  
test ral

### LED

2700 K / 3000 K / 3500 K / Tunable White

### Dimming

DALI / 0-10V

### Installation type

Remote driver Built-in Micro

### LED

CRI>90 530 lm 101,9  
2700 K / 3000 K / 3500 K / Tunable White

### Driver

Constant Current 300 110-277 V V  
50-60 Hz HZ

LED IP20  50-60Hz 

### Application

Ceiling Fixtures

### Packaging

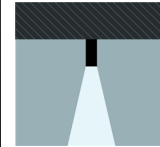
Box

Gross weight  
Net weight

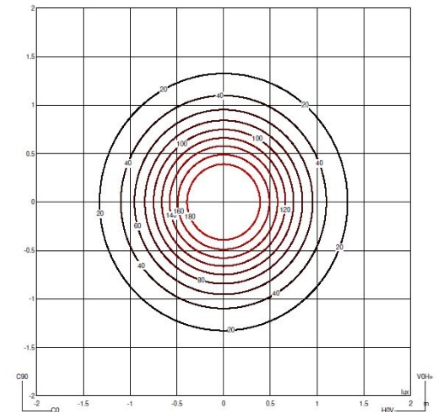
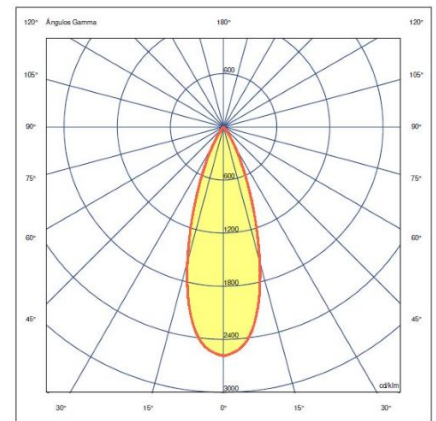
### Lighting effect

#### Accent Downlight

Narrow: Angles less than 20°. Suitable for generating high contrasts or projections at far distances.



### Photometric Data



### Efficiency

96.037 lm/W

### Coordination System

CG

### Total Flux

518.6 lm

### Maximum Value

2586.75 cd/klm

Any modifications require a minimum order quantity and extra lead time

All of our products come with a two year standard warranty. Check US & Canada Term and Condition sales@vibia.com

VIBIA, INC.

Office / Oficina  
272 Fernwood Ave. Edison, NJ 08837. USA

International T 732 417 1700  
Spain / Portugal T +34 934 796 970

sales@vibia.com  
www.vibia.com/us/usa